



# SITZMARKER

April 2014

## **St. Louis Ski Club Board of Directors 2013-2014**

### **President**

Nita Jones  
314-872-0944  
[info@stlouisskiclub.com](mailto:info@stlouisskiclub.com)

### **Vice President**

Carole Stevenson  
636-405-0660  
[activities@stlouisskiclub.com](mailto:activities@stlouisskiclub.com)

### **Trip Director**

Tom Coscia  
314-780-3021  
[tripdir@stlouisskiclub.com](mailto:tripdir@stlouisskiclub.com)

### **Communications Director**

Paul Snyder  
314-761-4797  
[commdir@stlouisskiclub.com](mailto:commdir@stlouisskiclub.com)

### **Past President**

Newton Siegel  
636-519-0730

### **Record Center Coordinator**

Sue Scott  
636-530-7690  
[financial@stlouisskiclub.com](mailto:financial@stlouisskiclub.com)

### **Highlights:**

Annual Meeting  
Sitzmarker Update  
FSA Summer Trip  
President's Message  
Trip Articles  
Activities Calendar

### **St. Louis Ski Club**

P. O. Box 4343  
Chesterfield, MO 63006

[www.stlouisskiclub.com](http://www.stlouisskiclub.com)  
[info@stlouisskiclub.com](mailto:info@stlouisskiclub.com)

## **Don't Miss Our Annual April Meeting at Ruby Tuesday's!**

The St. Louis Ski Club's **Annual Meeting** will be held on Thursday April 24 at **Ruby Tuesday's** in **Sunset Plaza** (*Sunset Hills, MO at Watson & Lindbergh.*) We'll begin the meeting at **7:00 pm**, but you're encouraged to show up early to enjoy some social time, or a beverage and food of your choice.

One important item of business at this meeting is the election of board members for the coming year including President, Vice President, Trip Director, and Communications Director (*ballot enclosed*). We want to thank the current board members, too, for their dedicated service to the club!

We will also be voting on some bylaw changes (*enclosed*) which we feel will help our club run more smoothly, and be most cost-effective in the coming years. One significant change is the elimination of the "Past President" as a board member. This saves the club money in the form of trip credits.

And finally, don't forget your **dues** are due! Save yourself some money and get your Membership Application and dues in by May 15<sup>th</sup>! Applications are available at our Web site: [www.stlouisskiclub.com](http://www.stlouisskiclub.com)

## **The Sitzmarker is Going Electronic!**

Due to the ever-increasing cost of postage and printing, future editions of the Sitzmarker will now come to you via e-mail. They will be sent out as an Adobe pdf attachment which you can open and read, save, or print at home!

For this reason, please make sure that we have your correct e-mail address. (*If you haven't been receiving the monthly SLSC "Out and About" from Carole Stevenson, it probably means that we don't have a good e-mail address for you. Send your name and correct e-mail to Carole at the address listed in the sidebar. If you don't have e-mail, arrangements can be made to send you a paper copy.*

## **Flatland Ski Association (FSA) Summer Trip**

The FSA is advertising a summer ski trip to the **Bariloche Ski Resort** in Argentina, including time in **Buenos Aires**. This trip is scheduled for August 2014, and includes six nights in Bariloche and two nights in Buenos Aires. Side activities are available for non-skiers. If you are interested and would like more details, contact: **Phil Bintz**: [pbintz1959@gmail.com](mailto:pbintz1959@gmail.com) or (402) 630-4753. Phil is with the Omaha Ski Club.



## President's Message

Hello Everyone!

Another wonderful ski season is coming to an end and with it, the end of my club presidency. It has been a fun and rewarding year with many trips, adventures, activities and memories. We've had ski trips to Taos, Telluride and Beaver Creek. There were great parties, happy hours and a chili cook off among other activities. I know the next season will be a great one with Carole Stevenson at the helm.

Many wonderful activities are in the works for next year. Possibly even a September trip to Europe!

Being active on the club board has been a very rewarding experience. The board works closely together to make club membership as pleasant, varied and fun as it can be for all of the members while taking care of the business aspects as well. Consider running for a position on the board next election. It is a wonderful way to see firsthand what it takes to run the club and to do your bit to keep us going.

I'd like to thank all of the people who contribute to making all of our trips and activities possible: The board members, the trip captains and people who run trip activities, those who host picture and other parties, and everyone else who just pitches in whenever needed.

Have a fantastic summer!

*Nita*



---

Check your most recent "Out and About" or contact Carole Stevenson for details about a fun night of theater on Saturday April 26<sup>th</sup>! Join us at the Clayton Community Theater (*the old CBC High School on Clayton Road*) for Agatha Christie's "**The Unexpected Guest**". Following the show we'll head over to Cyrano's for some wonderful desserts!

---

## Beaver Creek Ski Trip: "Not Exactly Roughing It"

The final club ski trip of the season found 38 anxious skiers having lots of fun on the slopes of both Beaver Creek and Vail Ski Resorts. Upon arrival at their lovely ski in/ski out condo, (Borders Lodge) members were greeted with a wine and cheese party and a short presentation about the features of Beaver Creek Ski Resort and the new Epic Mix program.

The lift was just a 40 ft glide from the locker room door of our Lodge. While the high steep country skiers like John Shansey, Irene Counts, Randy Donaldson, Denise Buehrer, Doug Bender, Andreev Alexander, John Wood, Ed Goedde, Cathy Colucci, Mary Sullivan, Faye Doerhoff, Bev Doolin, Greg Brickey, and Mike Stein of the club were heading out the door for first lift (8:30am), most everyone was not far behind after finishing a few cups of coffee.

Members enjoyed a very special club party at Borders Lodge. The catered party dinner consisted of trays of appetizers, salad, pork loin entree with sides, and delicious tiramisu. Mary Sullivan was surprised with a large birthday cake to celebrate the anniversary of her 30th birthday. Guests stayed and socialized long into the evening thanks to the abundance of the free flowing wine and beer!

Twelve members successfully navigated the unusually long Epic Mix race course. Winners included: Gold: Doug Bender and Irene Counts; Silver: John Shansey and Mary Sullivan. Bronze: Denise Buehrer and Greg Brickey. Congratulations to the others that survived this long zigzag including: Mike Stein, Charlie Nahlik, Mary Plumlee, Bobby Plumlee, Bob Schnieders, and Beverly Doolin.

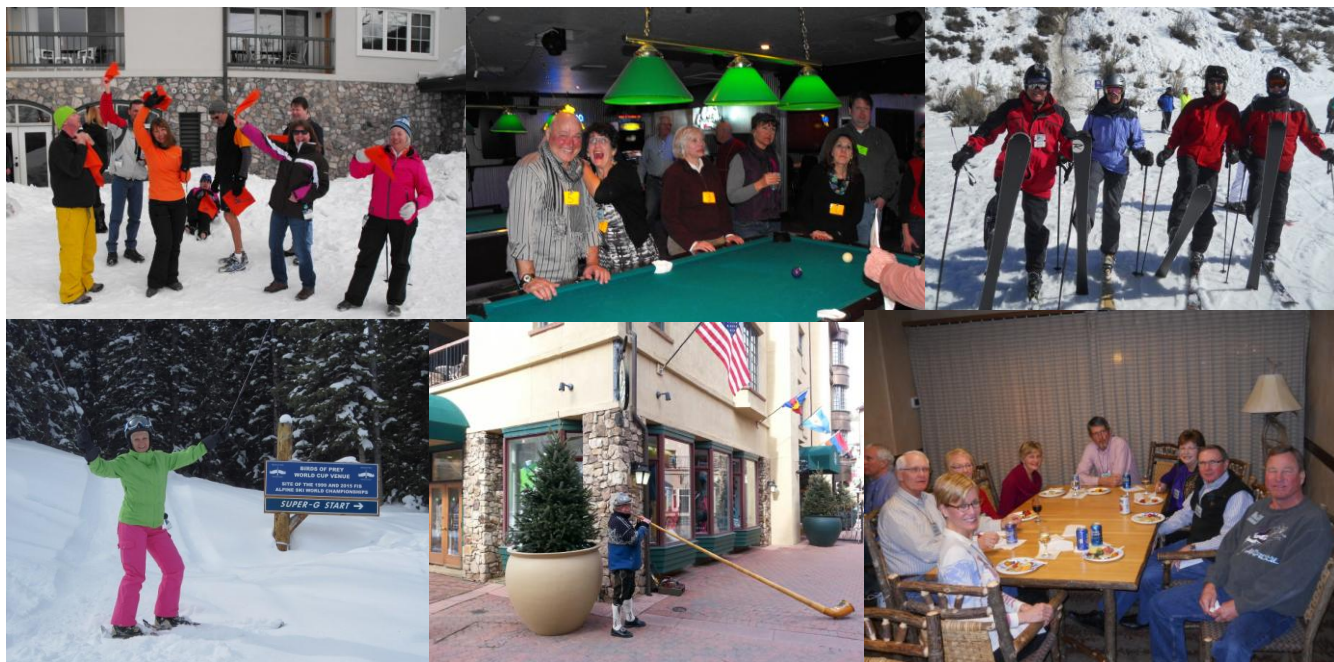
SharonAnn Smith enjoyed ski lessons and several others talked about doing it but were not observed. Maybe they were shadowing instructor groups! Mary Ann Bax and Sandy Barbre went dog sledding and had a wonderful time. John Shansey went snowmobiling in the deep back county and returned totally exhausted. As a result, he missed our big evening at the Montana Bar where we played billiards and bean bag "horseshoes" (known as corn holing in Colorado) where Thys Bax seemed to prove that he does this every day. The highlight of the games proved to be the billiards game called Crud. Referee Ed Goedde found that teaching this Canadian Air Force game to a bunch of skiers (drinking ones) can be a real chore. Team Captains Randy Donaldson and Greg Brickey did a great time of trying to get their team members to throw the ball from the proper end of the table but it was a futile effort. Although Ed almost lost his voice that evening, everyone had a very good exhaustive time and no one knocked the beer out of the Referee's hand..

We were happy to be joined on this trip by eight club members from the Far East -- of Carmi, Illinois: Sandy and Mountain Speedster Frank Barbre, Jim Gummersheimer and Diane Sneider, Marcie and Barney Barnett, plus Mary Ann and Thys Bax. Their friends Adri and Jim Zieren had to cancel the morning of the departure because of a death in the family. Maybe next year we can go ski "Mount Carmi" so they don't have to drive so far. We were surprised to find that exactly half of our 40 trip members were from east of the Mississippi. This group included: Bev Doolin, Randy Donaldson, Lou Boyer, Ellen Voyles, SharonAnn Smith, Rocky and Sheri Gray, John Shansey, Michael Stein, and Greg Brickey.

Ellen Voyles had a bad fall resulting in a broken right shoulder. Her roommate Lou Boyer proved to be a tremendous help in taking care of her the rest of the trip. The good news is that she will not require surgery to repair the damage. Jim Werkmeister had a hard fall coming in the first day which knocked him out of skiing but fortunately it was nothing more than a severe bruise on his hiney, that he captured with his phone camera and so generously shared with anyone who cared to look. After extensive time in the hot tub, and probably an extensive amount of alcohol, he did get out on the last day for a few runs.

The Highlight of Après Ski Events of the week was the Ski Club Olympics that included a snowball throwing contest where Olympians had to knock down targets of beer cans, a snow dumping relay, and the running with a roll of toilet paper between your legs relay races. The most difficult part of the toilet paper run was keeping from falling down from laughing at yourself. Thanks to Carole Stevenson, Lola Buyce and Ed Goedde for the talent they displayed in coming up with some fantastically funny games all week. The Jell-O shots provided by Carole Stevenson probably helped get the games off to a good start!

Everyone agreed that this was a lovely resort, a great group of skiers, exceptionally nice weather, and a really fun trip.





## Taos Ski Trip: "Land of Enchantment"

The first trip of the year to Taos, NM might have been better named "*Planes, Trains & Automobiles*" as that really described how we began our journey. What started as a simple trip to the airport quickly turned into a bigger challenge, or opportunity, for the group. With longer than normal check-in lines and numerous delays at the gate we realized our group would miss our connections and they couldn't get us new flights until the following Tuesday. After exhausting conversations with Southwest and other airlines, quick thinking by Paul, Candy and Sherry (Winter Ski) got our group on Amtrak's "Missouri River Runner" to Kansas City, and after a brief stop in Kansas City's beautiful Union Station, onto the "Southwest Chief" to Raton, NM where our hosts picked us up in vans for the final leg to Taos Ski Valley. We ended up arriving at 1:00 Sunday afternoon, instead of Saturday evening, but it certainly beat what Southwest had in mind for us!



Once we arrived at the Snakedance Condos and settled in we gathered for a welcome reception and introduction to what the resort had to offer. All went well at the resort and on the ski hills until Monday evening when "Stormin' Norman" (aka Norman Pratt) took ill and was admitted to the hospital in Santa Fe. On Wednesday Ken, Randy, Larry, Candy, Cindy and Mark (the non-skier) took a side trip to Santa Fe for a day of sight-seeing. While there they popped in to see Norman, which definitely lifted his spirits. Fortunately, Norman was discharged by the end of the week to the care of his niece who lives in Albuquerque. Norman returned to St. Louis and has already been seen dancing again. Poor Wayne sure missed his ski buddy that week, but ended up skiing at one time or the other with Bob and Chris plus his good buddy Farley.

Besides skiing, the Taos area offered many other great activities you just can't find at other resorts. One side trip found several of the group enjoying Monday (King's Day or Epiphany) afternoon watching a very impressive cultural event, the Deer and Buffalo Dances at the Taos Pueblo. The owner of the Snakedance loaned Paul one of their vans for the group's transportation. What great service and hospitality!

On Tuesday evening, Roger and Diane (owners of the Snakedance Condos) graciously opened their home to the ski club members for a dinner party following a sunset view from the bridge overlooking the Rio Grande Gorge. This was a first, since no one can remember this type of dining or scenic experience ever offered on a club trip. The food, the beverages, and their hospitality were beyond belief! There were some great photos ops at the gorge, but Mark (the skier) lost out when he took too much time setting up his tripod and missed the shots he wanted. While at the bridge, the group met up with former ski club member John Farley, who now lives in Colorado. John renewed old friendships and made new ones during his time with us. Others also did some shopping for some local souvenirs and jewelry from the merchants set up beside the bridge.

Several in the group made Angel Fire ski resort the destination on Wednesday for a day of skiing. Those having a good time skiing, even though snow was greatly needed, were Paul, Nita, Bob S., Chris, CK, Joe, Bob A., Ed and John W. Mark, the skier, and Farley drove over separately to meet the group with the topic of conversation of course being photography.

Thursday found Joe, Ken, both Mark's, Steve, Ed, John, and 1<sup>st</sup> timer Larry snowmobiling with Big Al himself from Big Al's Snowmobiling company. It was told that Big Al gave orders like a drill sergeant and no one could drive their snowmobiles over 25 miles per hour. Even though the pace was slow, everyone had had a good time.

Throughout the week Joe, Marty, Denise, Steve and Don took advantage of Taos' great ski school which included a fantastic discount on the lessons. Every day, they were seen perfecting their turns on the slopes. Ask Steve to show off his new "custom fitted boots" that he purchased at the resort. Supposedly, they are the perfect fit!

Be sure to ask Ken about his tours of the historical churches in and around Taos & Santa Fe or as Mark and Randy would say, "deity overload". Actually, several skiers took side trips to some of the famous churches such as, San Francisco de Asis adobe mission church in Taos, Loretto Chapel (*with its famous "miraculous" staircase*) in Santa Fe, and the Santuario de Chimayo chapel in Chimayo. Also enjoyed was the famous Palace of the Governors' in Santa Fe and the Georgia O'Keefe museum.

During our stay the Snakedance Condo and Taos Ski Valley resort staff were friendly, helpful and generous with their time and service. One of the positives was the service offered by the Bavarian Restaurant, known for their German food and beer. The restaurant shuttled 14 of us over for an enjoyable night of food, drink and spirited conversation all with 15% off discount coupons that could be re-used! And, while thinking about food, everybody (*except maybe Paul*) certainly had enough opportunities to get their fill of great Southwestern/Mexican food during the week. The best perk of course, was the ski-in/ski-out accommodations of the Snakedance Condos.

*One final note: Even though we weren't prepared to travel by train, the group handled the change well, with the majority having an enjoyable time. For example, nobody had to sit in a middle seat or fasten their seatbelt, and one could spend as much time as they wanted in the Club Car or Dining Car enjoying food and "refreshments". The best part of the train ride was the Observation Car watching the sunrise over the horizon in southeast Colorado and enjoying the mountains as we wound our way through Raton Pass in New Mexico. You just don't get that sort of service or scenery on an airplane! It would have been an even better experience if the group had been prepared with pillows, blankets and eyeshades for the train. Of course, some lucky few "ponied upped" a little extra to travel in style in the sleeper cars.*





## Telluride Ski Trip: "Unmatched in North America!"

The club departed St Louis on Saturday morning for Telluride, CO. Everyone was surprised to wake up and see snow on the ground and streets as we made our way to the airport. Although the roads were slick we all made it to the airport with no mishaps. This set the stage for a great trip with 23 skiers enjoying magnificent Telluride for 5 ski days with no injuries or illness. The snow and skiing were excellent and everyone had a great time.

Due to the large amount of luggage on the plane, four lucky skiers were diverted to another later flight connecting through Denver, and they made it to Montrose, our final destination, before the United flight. Our United flight left St. Louis on time and arrived in Montrose after a plane change in Houston.

We arrived in Telluride to find that the Hotel was overbooked. Six of our group were given accommodation in a penthouse suite for three nights. The Peaks lived up to its reputation in the club for excellent service with ski valets to help everyone on and off with their skis and the ski in ski out was a great treat.

Sunday morning most of the group went on a mountain host tour of the ski area. Sunday evening was the trip party at Brown Dog Pizza. Our Captain Larry Essmann arranged an excellent party with good food and great company. The group in the penthouse suite hosted a party on Tuesday night. The top floor of the peaks is great party room with 270 degree views of the mountain village and ski area. A truly great place to watch a sunset and enjoy good conversation. Dining out in Telluride is always a great experience. Our first night many of us enjoyed a casual experience at Poacher's Pub. Later in the week members of the group dined on classical French cuisine at La Marmotte. The New Sheridan Chophouse was also on the list of must visits for fine dining as was the Palmyra at the Peaks.

There was no club race on this trip. John Shansey ran the NASTAR course and earned a bronze medal. Marty Trbovich, Pat Pender and Larry Essmann enjoyed snow shoe tour with beautiful views of the mountains.



## Steamboat Ski Trip: “Ski Town U.S.A. with the FSA”

This year’s FSA trip to Steamboat was ON, then OFF, then “sort of” ON again. Due to low numbers, the club actually cancelled the Steamboat trip, but a small group of Club members found their way to Steamboat Springs in January, anyhow! Paul Snyder, Frank Atkinson, RandyMan (Donaldson), Rob Sidler, John Reynolds, Faye Doerhoff, Bev Doolin and Mary Sullivan ventured out west to ski, of course, and to partake in the 2014 65th Annual Flatland Ski Association festivities. Former club member Chuck Boylan is still on the hot seat. He signed up through KC, and we are still holding that against him (all for fun, of course – at least he didn’t race for KC).

The group made their own ways to the mountain, and easily tracked each other down to enjoy more than 20 inches of fresh Champagne Powder™ for six days of skiing, skiing, and more skiing. Wow, there’s no place like Steamboat Colorado!

A few skiers (*and one boarder*) took part in the FSA challenge races again this year. The snowshoe relay race was the highlight, as usual. The official race results were far less spectacular than the stellar skiing and remarkable views from Storm Peak, Morning Side and Thunderhead. Being on the mountain with fresh deep powder more than replaced any points we may have garnered racing.

Highlights outside the indescribable, breathtaking snow were – John’s mind-boggling twice baked potatoes and steak dinner, Bev’s hand-made meatballs on spaghetti night, Central Park Liquors and the notorious ‘white Russian’. Don’t ask! We also enjoyed many of the FSA activities including the welcome party with the baked potato and chili bar, and the banquet, which was a *fantastic* western barbeque, including ribs that were falling off the bone. And we don’t want to forget all of the free Boulevard beer, as they’re one of the FSA’s major sponsors.

Not only was our little group happy to be able to be a part of the FSA ski and race activities, thanks to some hard work on the part of Sue Scott and our board making an exception to do this for us this year only, but the other FSA member clubs were really happy to see a St. Louis presence at the event, too!



### Excess Ski Equipment?

Now that the ski season is coming to a close, members of the **St. Louis Ski Club** who have “gently used” ski equipment or clothing that they’re no longer using *may* place a notice in the Sitzmarker (*or monthly “Out and About” e-mail*) to let other club members know about its availability. This is *only* for ski-related equipment or clothing, though, to help your fellow club members out; it’s not a public garage sale site!

We do have two pairs of skis that were donated by member Bob Ackenhausen. He and Nancy are “downsizing” due to their move to New York. One is a pair of K2s, and the other is a pair of Nordica skis. Both come with poles. Paul Snyder can e-mail you a photo, or they will also be available on a first come-first served basis at the April meeting!



P. O. Box 4343  
Chesterfield, MO 63006

<b>St. Louis Ski Club</b> <b><i>Sitzmarker</i></b> <b><i>Advertising Rates</i></b>  <i>Current printing is 260 copies</i>  Full page (L9 x W6-1/2)      \$ 50 Half page (L4-1/2 x W6-1/2)    \$ 35 Quarter page (L3.25x W2.25)    \$ 20 Business Card (L3-1/2 x 2)      \$ 10 Full-page Inserts*                \$100  *Full-page inserts may be accepted for inclusion in the <i>Sitzmarker</i> at a cost of \$100. Advertisers must provide sufficient copies for inclusion in the <i>Sitzmarker</i> at their own expense.  <b>CONTACT: Carole Stevenson</b> Vice President @ 636-405-0660 activities@stlouisskiclub.com	<b>MARK YOUR CALENDARS</b>		
	<b>DATE</b>	<b>ACTIVITY</b>	<b>LOCATION</b>
	Friday April 18 4:30 pm	Happy Hour Bar Louie	110 S. Kirkwood Rd Kirkwood, MO
	Thursday April 24 7:00 pm	Annual Meeting and Elections	Ruby Tuesday's Sunset Hills
	Saturday April 26 Details to Come!	Clayton Comm. Theater "The Unexpected Guest"	6501 Clayton Rd Clayton, MO
	Friday May 16 4:30 pm	Happy Hour Billy G's	131 W. Argonne Kirkwood, MO
	Friday June 6 Time TBA	Dog 'n Suds (Help is needed!)	Tilles Park Brentwood, MO
	Friday June 20 4:30 pm	Happy Hour (Tentative)	Location TBD